

Intro | LEED | high performance | M&V | Questions

CANMET Materials and Testing Laboratory

An Update Following 2-years of Operation of One of Canada's Greenest Buildings



Image courtesy of: Diamond Schmitt Architects

Intro | LEED | high performance | M&V | Questions



Intro | LEED | high performance | M&V | Questions



Image courtesy of: Diamond Schmitt Architects

Intro | LEED | high performance | M&V | Questions



LEED Platinum Certified



Image courtesy of: Diamond Schmitt Architects

CARROTS & STICKS

84%

Construction Waste Diverted from Landfill

88%

In-Building Water Use
Reduction

71%

FSC Certified Wood

31%

Recycled Materials

100%

Landscape Potable Water Use Reduction

44%

Regional Materials

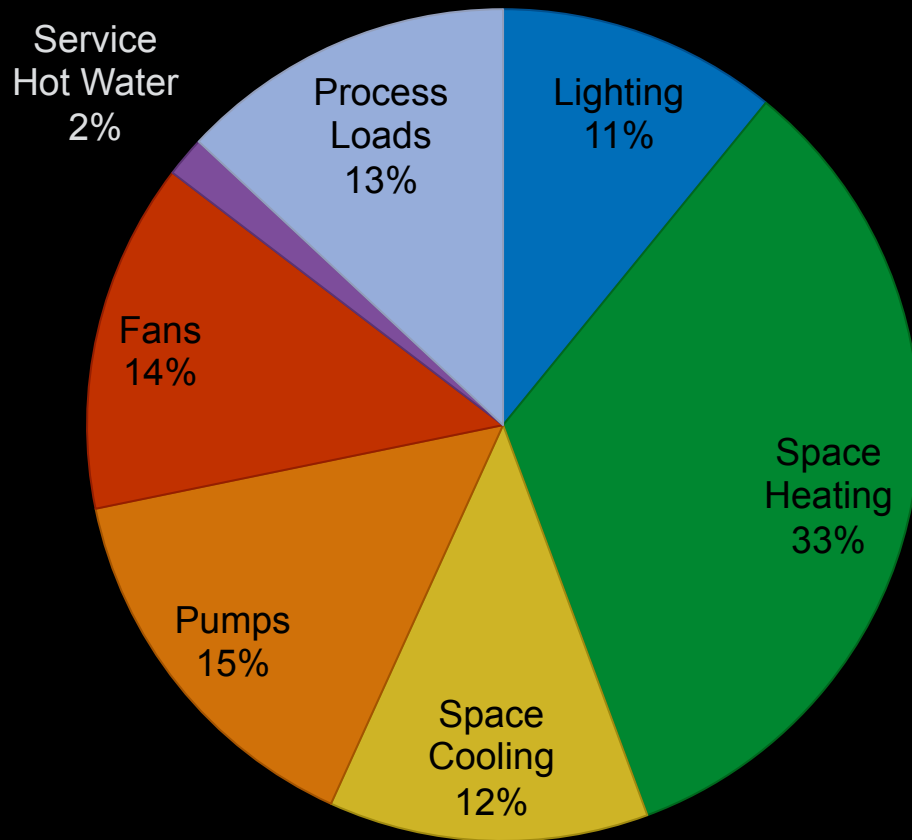
100%

Low-VOC Paints, Coatings, Adhesives &
Sealants

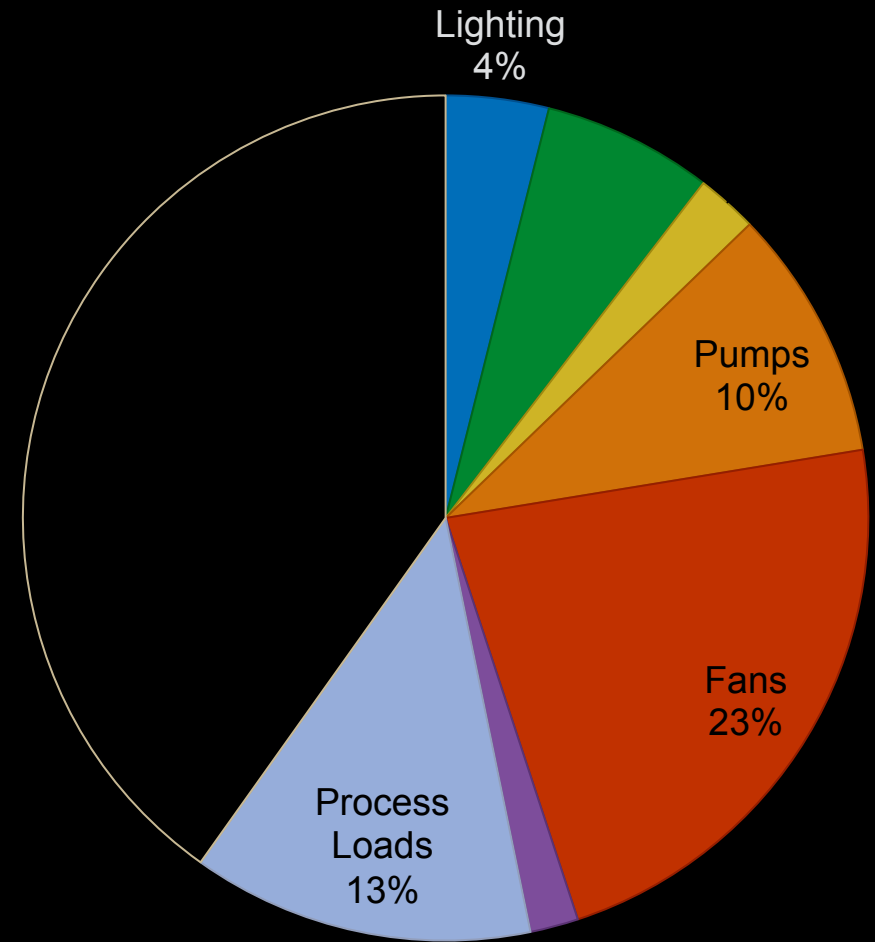
Intro | LEED | high performance | M&V | Questions



ENERGY



Reference Building



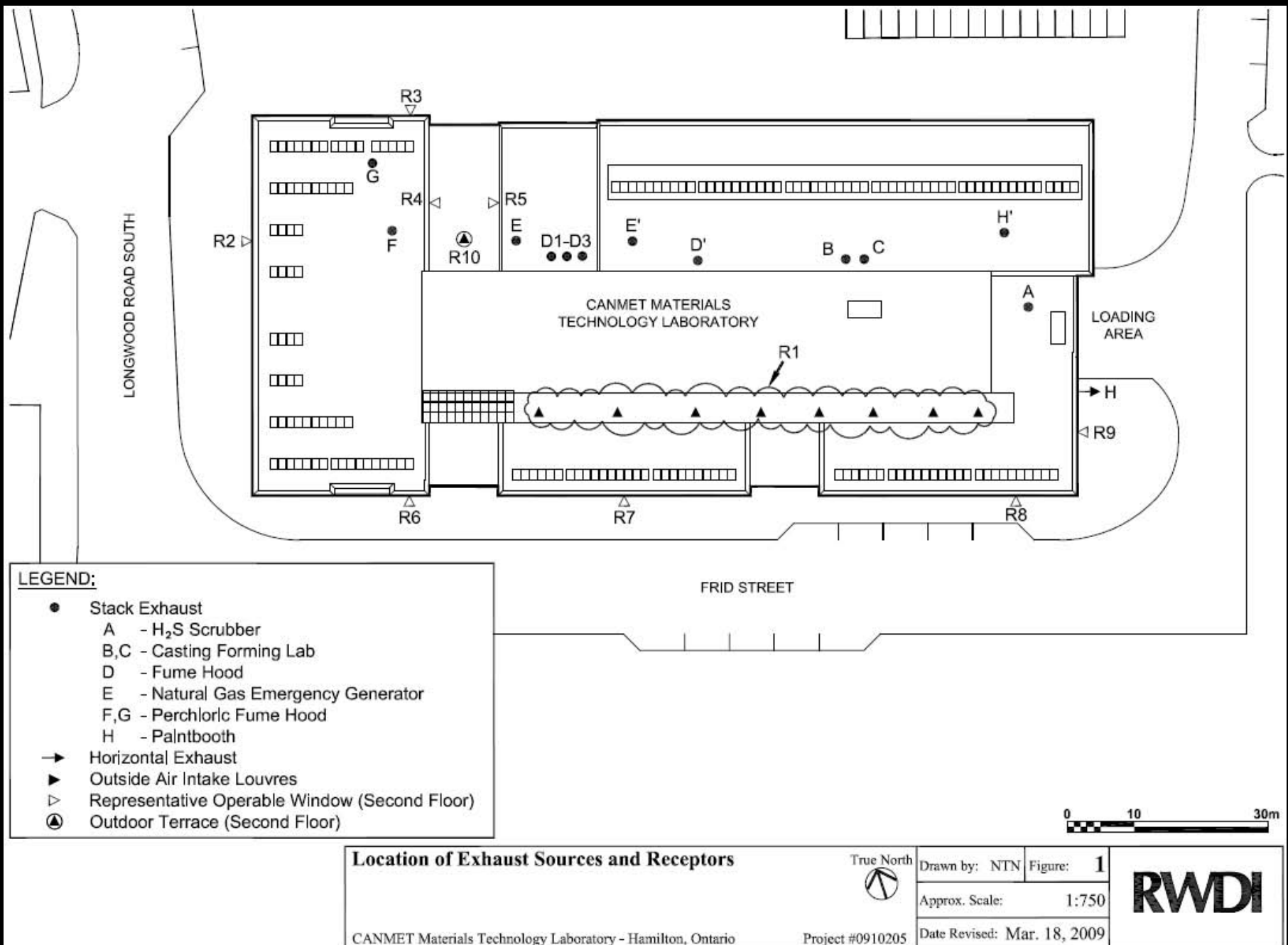
Design Building

Intro | LEED | High Performance | M&V | Questions

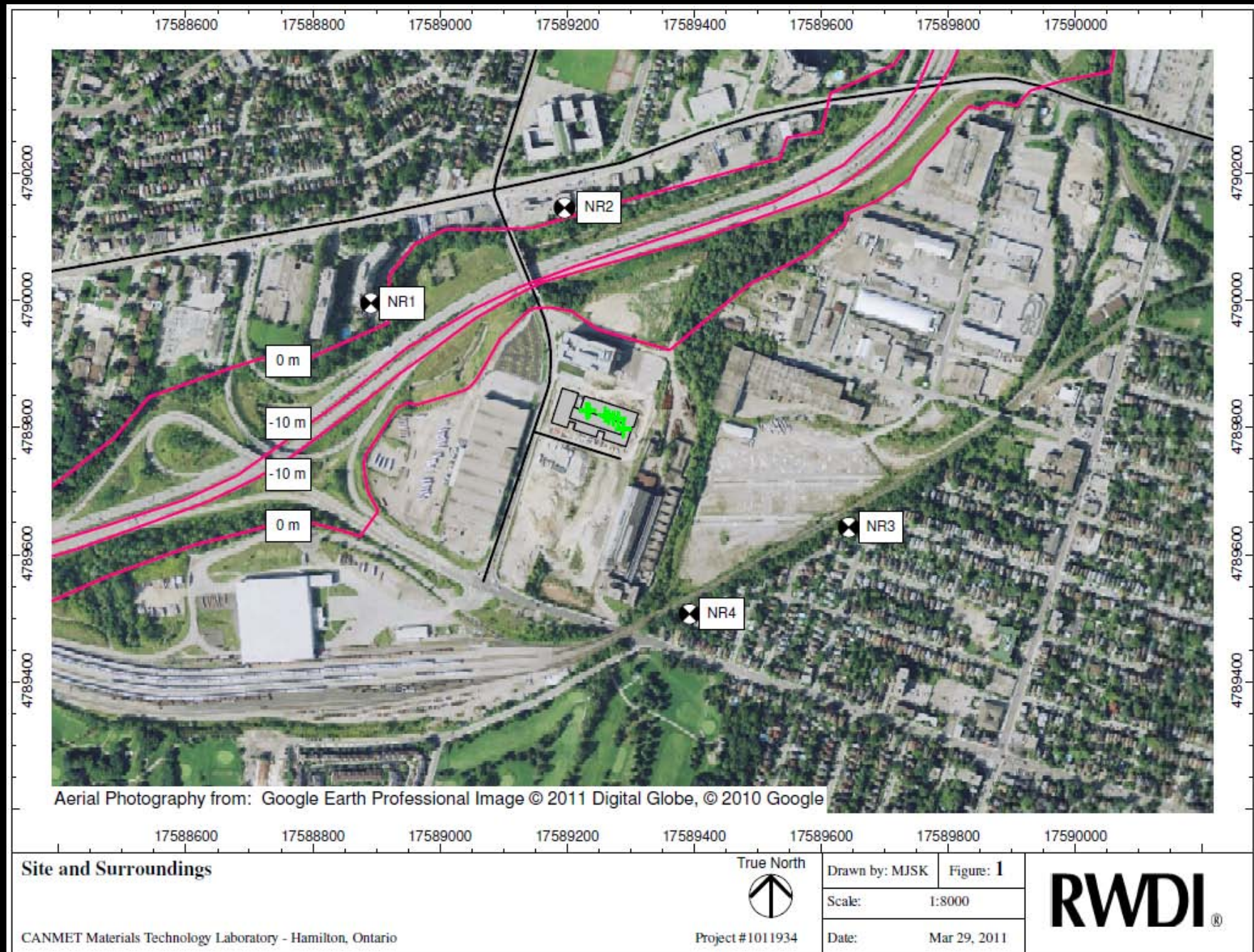




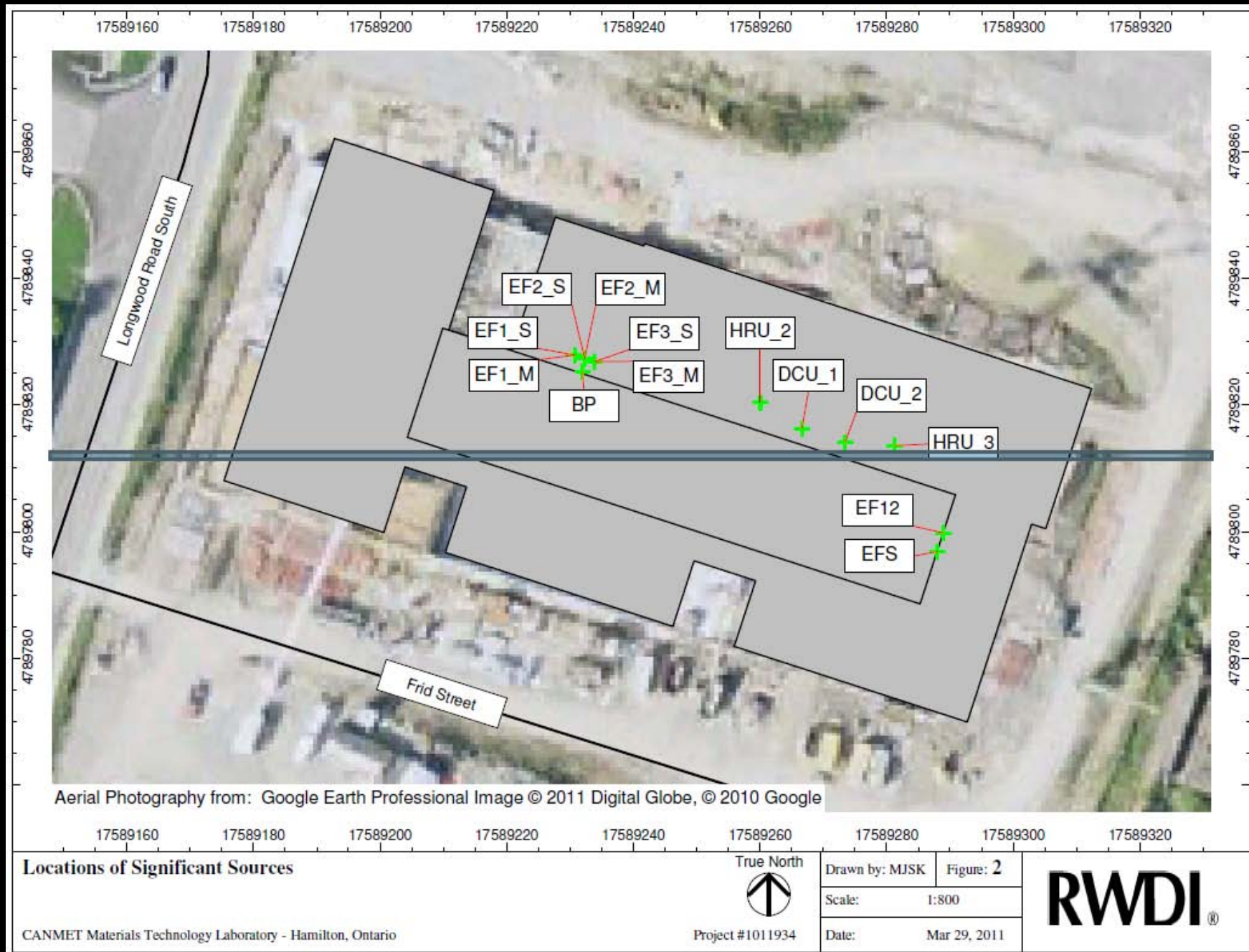
Intro | LEED | High Performance | M&V | Questions



Intro | LEED | High Performance | M&V | Questions



Intro | LEED | High Performance | M&V | Questions



Intro | LEED | High Performance | M&V | Questions



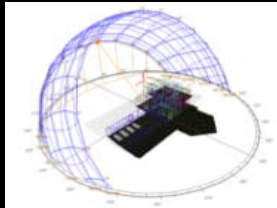
MEASUREMENT & VERIFICATION

Beyond IDP: Design, Construction & Operation

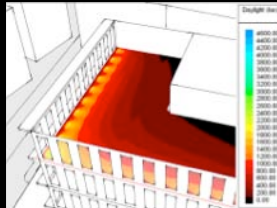
Design



Schematic Design



Detailed Design



Construction Documents



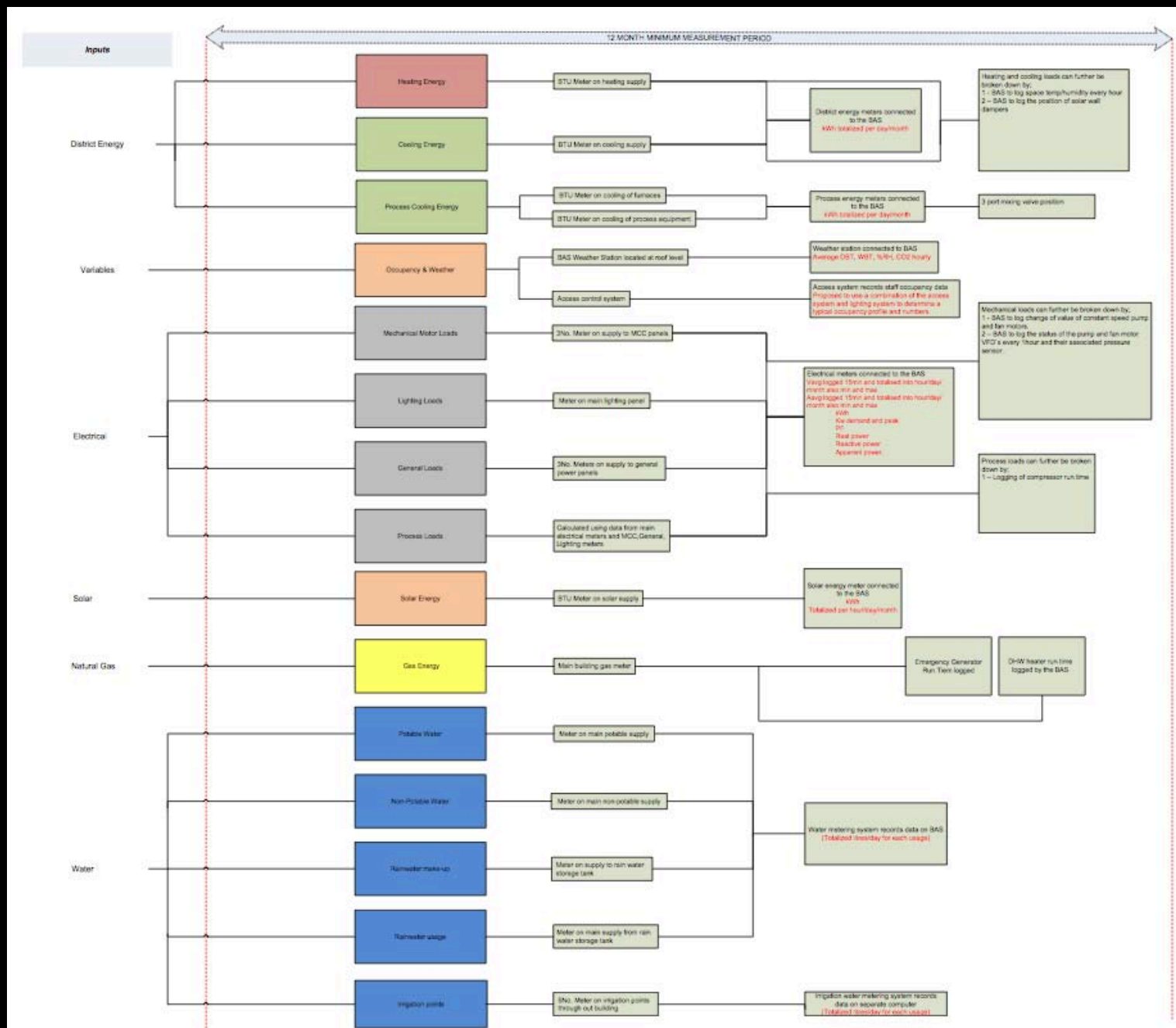
Construction



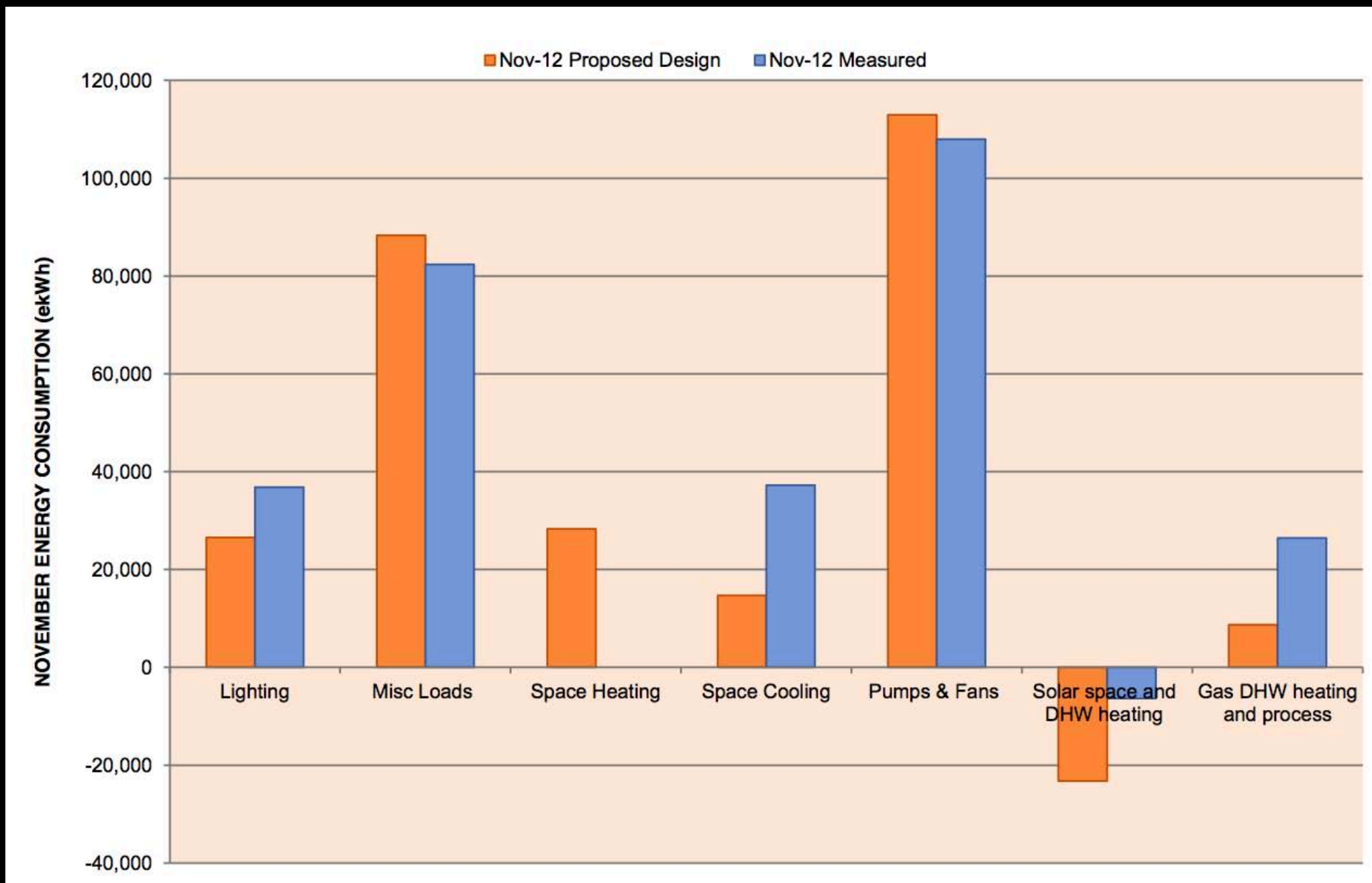
Operation



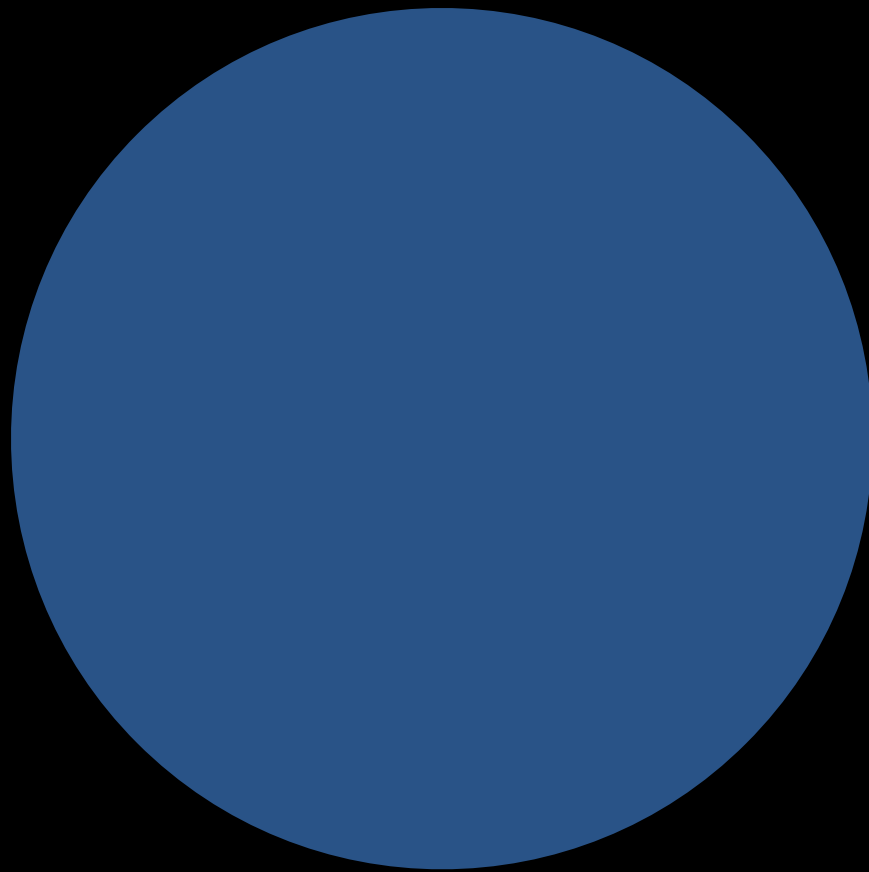
Intro | LEED | high performance | M&V | Questions



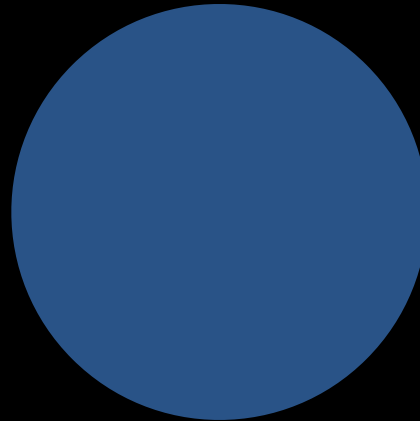
Intro | LEED | high performance | M&V | Questions



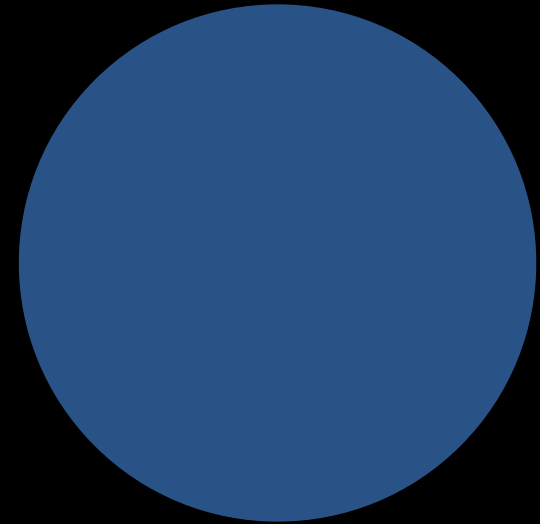
420 kWh/m²



LABS21 - Reference Building
Total: 1,167 ekWh/m²/yr

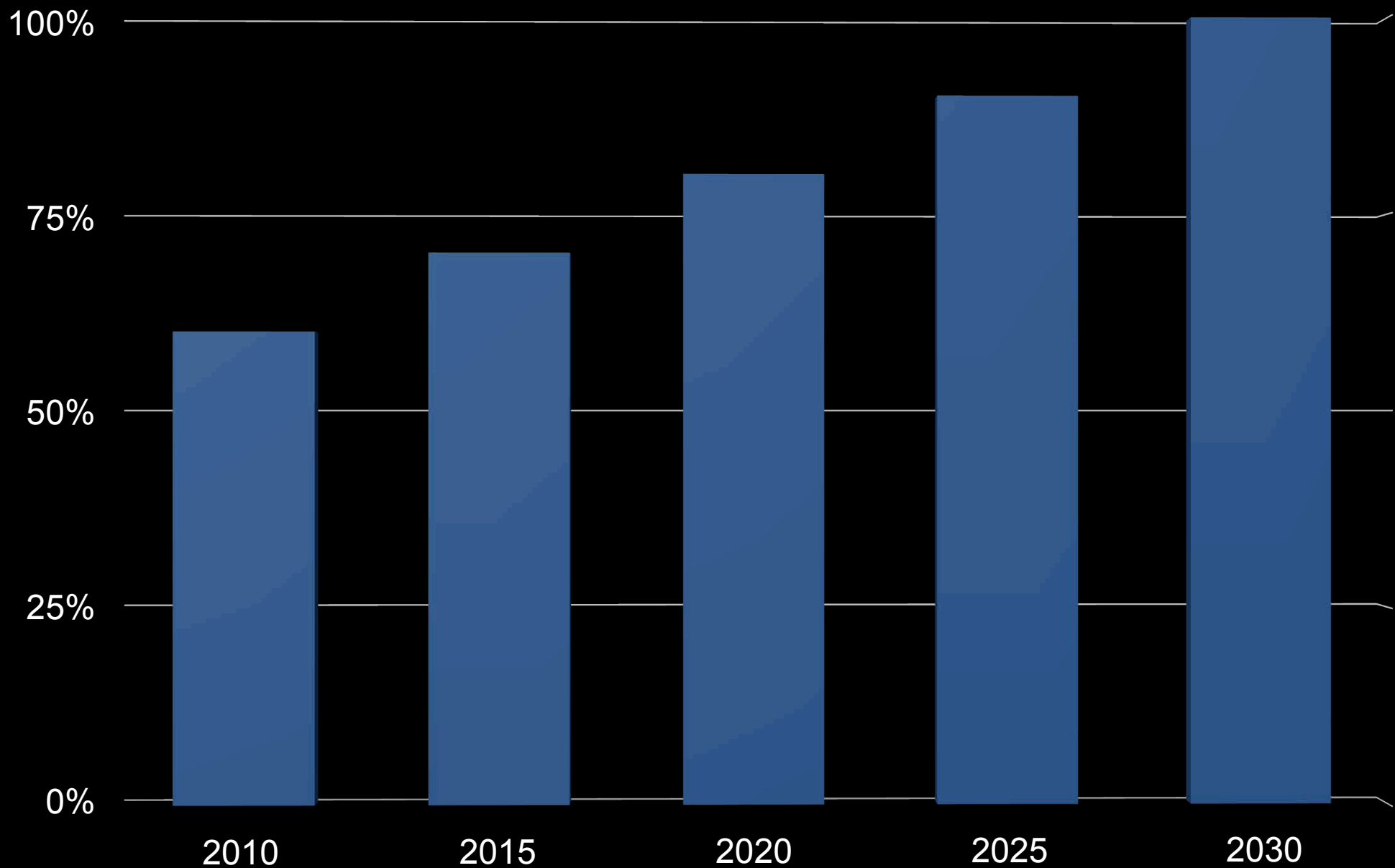


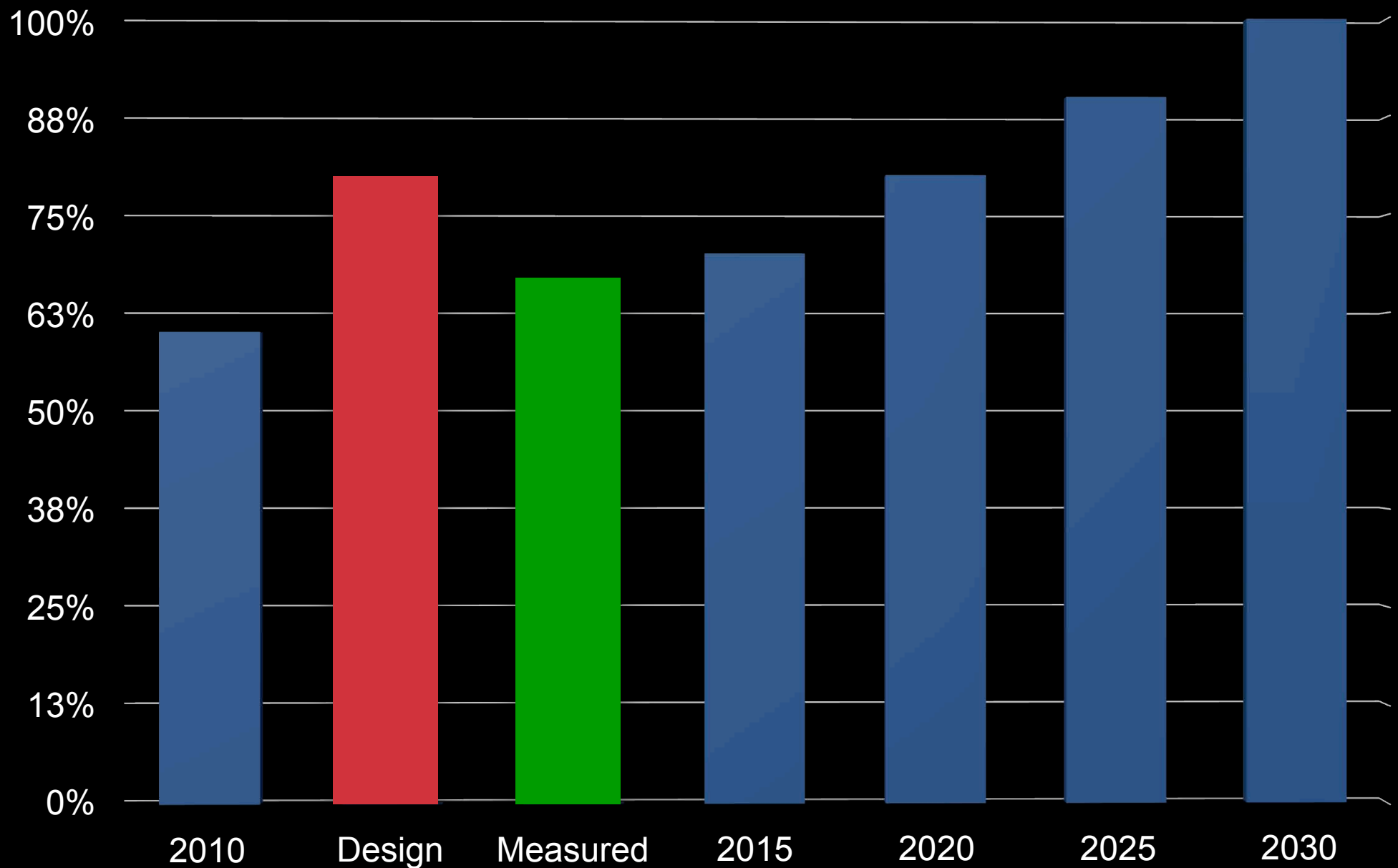
Design Building
Total: 270 ekWh/m²/yr



Measured Building
Total: 420 ekWh/m²/yr







Intro | LEED | high performance | M&V | Questions

